

**Bethlehem Lutheran**  
CHURCH & SCHOOL 

1121 Georgia Ave. Sheboygan, WI 53081

Non-Profit Org  
U.S. Postage  
**PAID**  
Sheboygan Falls, WI  
Permit No. 11

Address service requested

**CONNECT WITH US**

**Bethlehem Lutheran**

1121 Georgia Avenue  
Sheboygan, WI 53081

[www.ourbethlehem.com](http://www.ourbethlehem.com)

Church: (920) 452-4331  
[infochurch@ourbethlehem.com](mailto:infochurch@ourbethlehem.com)

School: (920) 452-5071  
[infoschool@ourbethlehem.com](mailto:infoschool@ourbethlehem.com)



[www.facebook.com/  
ourbethlehem](http://www.facebook.com/ourbethlehem)



[https://twitter.com/  
ourbethlehem](https://twitter.com/ourbethlehem)

Rev. J. Patrick Niles  
*Administrative Pastor*

Rev. Jeremy Hanson  
*Associate Pastor*

Mr. Joshua Klug  
*Principal*

**WORSHIP & BIBLE STUDY OPPORTUNITIES**

Worship Times

Saturday - 5:30pm

Sunday - 8:00am & 10:30am

Wednesday - 6:00pm

Bible Studies

Saturday evening ~ 4:15 to 5:15pm

Sunday morning ~ 9:15 to 10:15am

Sunday School ~ 9:15 to 10:15am

**Apr 2026**

**MEMBERSHIP**



Lutheran Church  
Missouri Synod



Sheboygan Lutheran  
High School  
Association



Sheboygan Area  
Lutheran Schools  
Association

# April 2026

Sun

Mon

Tue

Wed

Thu

Fri

Sat

			<p><b>1</b></p> <p>Reading Partners 1:00pm</p> <p>Public School Confirmation 3:30pm</p> <p><b>NO WORSHIP</b></p> <p>Stewardship meeting 7:00pm</p>	<p><b>2</b></p> <p>Maundy Thursday Worship 6:00pm</p>	<p><b>3</b></p> <p><b>NO SCHOOL</b> (both offices closed)</p> <p>Good Friday Worship 1:00pm</p> <p>Tenebrae Worship 7:00pm</p>	<p><b>4</b></p> <p>NO Bible class</p> <p>Easter Vigil Worship 5:30pm</p>
<p><b>5</b></p> <p>Easter Sunday Worship 6:00am, 8:00am, and 10:30am</p> <p>Easter Breakfast 7:00-10:00am</p> <p>NO Bible class or Sunday School</p>	<p><b>6</b></p> <p><b>NO SCHOOL</b> (both offices closed)</p> <p>Rick Zeuner Bible class 6:00pm</p>	<p><b>7</b></p> <p>LWIM meeting 6:30pm</p>	<p><b>8</b></p> <p>Reading Partners 1:00pm</p> <p>Public School Confirmation 3:30pm</p> <p><b>NO WORSHIP</b></p>	<p><b>9</b></p> <p>Adult Choir practice 7:00pm</p>	<p><b>10</b></p> <p><b>BLS Fun Fair</b> 5:00-6:30pm (brief PTL meeting prior)</p> <p>LHS Musical 7:00pm</p>	<p><b>11</b></p> <p>Bible class 4:15pm</p> <p>Worship w/HC 5:30pm</p> <p>LHS Musical 7:00pm</p>
<p><b>12</b></p> <p>Worship w/HC 8:00am &amp; 10:30am</p> <p>Bible class &amp; Sunday School 9:15am</p> <p>New Member Class begins</p> <p>LHS Musical 2:00pm</p>	<p><b>13</b></p> <p>BCDS meeting 7:00pm</p>	<p><b>14</b></p> <p>Quilters 9:00am</p>	<p><b>15</b></p> <p>Reading Partners 1:00pm</p> <p>Public School Confirmation 3:30pm</p> <p>Worship w/HC 6:00pm</p> <p>Parish Planning Council 7:00pm</p>	<p><b>16</b></p> <p>Adult Choir practice 7:00pm</p> <p>May Visitor deadline (noon)</p>	<p><b>17</b></p> <p>Preview Night for LHS Dinner Auction 6:00-8:00pm</p>	<p><b>18</b></p> <p>Bible class 4:15pm</p> <p>Worship w/HC 5:30pm</p> <p>LHS Dinner Auction 4:30pm</p>
<p><b>19</b></p> <p>Worship w/HC 8:00am &amp; 10:30am</p> <p>Bible class &amp; Sunday School 9:15am</p>	<p><b>20</b></p> <p>Rick Zeuner Bible class 6:00pm</p>	<p><b>21</b></p>	<p><b>22</b></p> <p>Reading Partners 1:00pm</p> <p>Public School Confirmation 3:30pm</p> <p>Worship w/HC 6:00pm</p>	<p><b>23</b></p> <p>Adult Choir practice 7:00pm</p>	<p><b>24</b></p> <p><b>Celebrate the Ministry @ Pine Hills 6:00pm</b></p>	<p><b>25</b></p> <p>Bible class 4:15pm</p> <p>Worship w/HC 5:30pm</p>
<p><b>26</b></p> <p>Worship w/HC 8:00am &amp; 10:30am</p> <p>Bible class &amp; Sunday School 9:15am</p> <p>Youth Group outing 4:00-5:30pm</p>	<p><b>27</b></p> <p>Rick Zeuner Bible class 6:00pm</p>	<p><b>28</b></p> <p>Quilters 9:00am</p> <p>Endowment meeting 6:00pm</p>	<p><b>29</b></p> <p>Public School Confirmation 3:30pm</p> <p>Worship w/HC 6:00pm</p> <p>Voters meeting 7:00pm</p>	<p><b>30</b></p> <p>BLS Concert 6:00pm</p> <p>Adult Choir practice 7:00pm</p>		

# From the desk of Pastor Niles

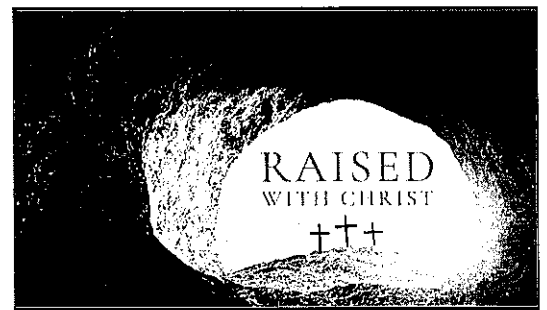
## Raised in Christ: A Living Hope

*Blessed be the God and Father of our Lord Jesus Christ! According to his great mercy, he has caused us to be born again to a living hope through the resurrection of Jesus Christ from the dead, to an inheritance that is imperishable, undefiled, and unfading, kept in heaven for you, who by God's power are being guarded through faith for a salvation ready to be revealed in the last time. In this you rejoice, though now for a little while, if necessary, you have been grieved by various trials, so that the tested genuineness of your faith—more precious than gold that perishes though it is tested by fire—may be found to result in praise and glory and honor at the revelation of Jesus Christ. Though you have not seen him, you love him. Though you do not now see him, you believe in him and rejoice with joy that is inexpressible and filled with glory, obtaining the outcome of your faith, the salvation of your souls. ~1 Peter 1:3–9 ~*

“Blessed be the God and Father of our Lord Jesus Christ!” With these words, the apostle Peter bursts into praise—not because life is easy, but because Christ is risen. And because He is risen, everything has changed. Peter writes to Christians who are suffering—facing hardship, uncertainty, and even persecution. Yet he doesn't begin with their troubles. He begins with their identity: “According to His great mercy, He has caused us to be born again to a living hope through the resurrection of Jesus Christ from the dead.”

That phrase—living hope—is at the heart of the Christian life.

This hope is not wishful thinking. It is not crossed fingers or vague optimism. It is living because Jesus is living. Christ's resurrection is not just something that happened to Him—it is something that has happened *\*for you\**. In your Baptism, you were joined to His death and raised with Him to new life. You are, even now, a person who has been raised in Christ. That means your future is secure. Peter describes it as “an inheritance that is imperishable, undefiled, and unfading, kept in heaven for you.” In a world where everything seems to wear out, break down, or slip away, this promise stands firm. Your life in Christ cannot decay. Your salvation cannot be taken. Your inheritance will not fade.



But Peter is also honest: the Christian life still includes suffering. “Though now for a little while, if necessary, you have been grieved by various trials...” Being raised in Christ does not remove us from hardship—it redefines it. Trials are no longer signs that God has abandoned you. Instead, they become the place where your faith is refined, like gold tested in fire.

And here is the paradox: even in the midst of trials, Christians rejoice. “Though you have not seen Him, you love Him... you rejoice with joy that is inexpressible and filled with glory.” How can this be?

Because your life is anchored not in what you see, but in who Christ is. You may not see Him now, but you know Him. You hear His voice in His Word. You receive His gifts in His Sacraments. And through these, He sustains you with the living hope of His resurrection.

To be “raised in Christ” is not just a future promise—it is a present reality. It means that you are no longer defined by your sin, but by His mercy. You are no longer bound by death, but held in His life. You are no longer without hope, but filled with a living, active, enduring hope. And so, even as we walk through a world of uncertainty, we do so as Easter people. Christ is risen—and in Him, so are you.

“Blessed be the God and Father of our Lord Jesus Christ!”

In Christ,  
Pastor Niles



**Bethlehem Lutheran** ✨  
CHURCH & SCHOOL

INVITES YOU TO

Celebrate  
the  
Ministry

FRIDAY, APRIL 24TH

PINE HILLS COUNTRY CLUB  
4914 SUPERIOR AVE. SHEBOYGAN

6PM-DOORS OPEN & CASH BAR  
7PM-DINNER & PROGRAM

The cost is \$10 per person, collected at the door.  
This is not a fundraiser — just a special Adults-only evening  
to gather and enjoy time together.

Seating is limited. Please RSVP to the church office at  
(920) 452-4331 or [amy.weir@ourbethlehem.com](mailto:amy.weir@ourbethlehem.com) by April 10.



# April News

## BETHLEHEM LWIM MISSION

The Bethlehem Lutheran Women in Mission has chosen the Concordia Theological Seminary, Ft. Wayne, Food Co-op as the **April Mission of the Month**.

This is a South Wisconsin District LWIM Mission grant. The co-op will use the raised money to purchase perishable food items for their students and families. The food co-op is open 50 weeks a year for weekly shopping by LCMS pastoral & deaconess students, as they prepare for their important roles in full-time church work.

Please pray for and support this worthy mission. Use the designated envelopes for your donation.

## TEN+ YEARS AS A MISSIONARY

What's it like to have & raise children in a foreign country, in a foreign culture, all while serving as an LCMS missionary to the people of Togo, Africa? To hear more about this very special calling, join the Bethlehem Lutheran Women in Mission at their next gathering (Tuesday, April 7 @ 6:30pm). Alice Buck, a member of Trinity, Sheboygan, will share the missionary experiences that her family had.

Anyone interested is invited to attend.

## IS MEMORIZING SCRIPTURE UNAPPEALING TO YOU OR YOUR KIDS?

Here are some thoughts that could change your mind:

- 1). When you hide God's Word in your heart, the Holy Spirit can bring it to your mind.
- 2). God speaks to you through ideas, thoughts, and suggestions from the Holy Spirit.  
It's called inspiration.
- 3). You need to study the Bible in order to store up truth so that the Holy Spirit can bring it to your mind at just the right time.

## GROUP BIBLE STUDY OFTEN PRODUCES "AH-HA" MOMENTS

Here's what's happening in April:

**Pastor Niles**, Sunday mornings (9:15am) in the library, 4/12--5/10  
*"What Lutherans Believe"*, a 5-week review of basic Lutheran Doctrine for new members or current members.

**Pastor Hanson**, Sunday mornings (9:15am) in the Century Room  
*"Christ in the Old Testament"*, an exploration of how Christ is revealed in the Old Testament through people, events, and promises.

**Rick Zeuner**, Monday evenings (6:00-7:00pm) in the Century Room, 4/7, 4/20, 4/27  
*"Biblical Snacks"*, a study of several short, often under-studied books of the Bible.

Saturday evenings (4:15pm) in the Century Room  
Alternating pastors and their subjects.

## UPPER GRADE SUNDAY SCHOOL CHILDREN LEARN "HOW THE CHURCH GREW"

Age appropriate lessons reveal what happened after Martin Luther. Awesome activities related to the theme will include snacks and the movie "Come Follow Me - an Invitation from Jesus"

## YOUTH GROUP

Attention Junior & Senior Youth: mark your calendar for Sunday, April 26 (4:00-5:30pm) for our next youth group outing. Plans are in the works, so watch future bulletins for more details!

# More April News

## CRUSADE FOR BIDS DINNER AUCTION

Join us for an evening of fellowship and generosity at Sheboygan Lutheran High's annual dinner auction on Saturday, April 18 at LHS! Enjoy a scrumptious buffet dinner, must-have live and silent auction items, spirited games, a tantalizing Dessert Dash, and more! Reservations are required, with early bird tickets for \$73 prior to April 10. Visit [lutheranhigh.com/auction](http://lutheranhigh.com/auction) for reservations and event details.

## NEXT NEW MEMBER CLASS STARTS APRIL 12

**What Lutherans Believe**, also known as our New Member Class, will begin this month. This class is for those who would like to be members of the body of Christ in this place, as well as for those who have been members and would like to be refreshed in what we believe, teach and confess.

This class will begin on Sunday, April 12. It will continue to take place on Sundays (4/19, 4/26, 5/3 and 5/10) during Bible Class hour (9:15-10:15am). These classes are a great time for fellowship and growing together. On May 10, during our 8:00am worship service, we will welcome all those who have come to Bethlehem since our last class. A special coffee hour will take place in between the services.

We would like to welcome you to continue your walk with Jesus here at Bethlehem. If you are interested in joining the **What Lutherans Believe** class, please contact Fred Jabs by email [pfkjabs@hotmail.com](mailto:pfkjabs@hotmail.com) or call/text him at 920-889-4304. Feel free to contact Amy in the church office as well.

## DID YOU KNOW....

That Sunday School welcomes all children, whether they attend Bethlehem Lutheran School, public school, or are home schooled? To enroll a child special to you, go to the school cafeteria any Sunday at 9:15am. Sunday School teacher, Dusty Stielow, will direct you to your child's room.

## UPCOMING SALES AT NEAT REPEATS

4/7-4/11: furniture, 50% off

4/14: everything in the store, 30% off

4/15-4/18: linens, 50% off

4/21-4/25: all clothing, \$1.00

4/28-5/2: shoes & socks, 50% off

## TEACHER & STAFF APPRECIATION WEEK: MAY 4-8

Join us as we celebrate! This is a special time dedicated to recognizing the incredible educators and staff who inspire, guide, and support our students each and every day. Our teachers and staff go above and beyond to create meaningful learning experiences, build strong connections, and shape the future of our BLS community. This special week in May is a chance for all of us to come together and show our gratitude for their dedication, passion, and hard work. To make the week even more fun, we will be celebrating with daily dress-up days and sharing special gift & appreciation ideas for each teacher and staff. We encourage everyone to participate, get creative, and find small ways to make everyone feel seen and valued. Whether it's a kind note, a favorite snack, a thoughtful gesture, or simply a heartfelt "thank you", every act of appreciation makes a difference. (Students will receive a flyer soon.) Let's make this week in May (4-8) a week full of gratitude, encouragement, and celebration for the amazing teachers & staff who impact so many lives each day!

## COMMUNICATION INFORMATION (ADDRESS / EMAIL / PHONE)

We continue to collect updated information. The Visitor will continue to be mailed only at this time.

## CELEBRATE THE MINISTRY

If you haven't already, don't forget to RSVP for the Celebrate the Ministry evening at Pine Hills on Friday, April 24. Please see the flyer in this edition of the Visitor.



PTL INVITES YOU TO THE

# Bethlehem Lutheran

CHURCH & SCHOOL



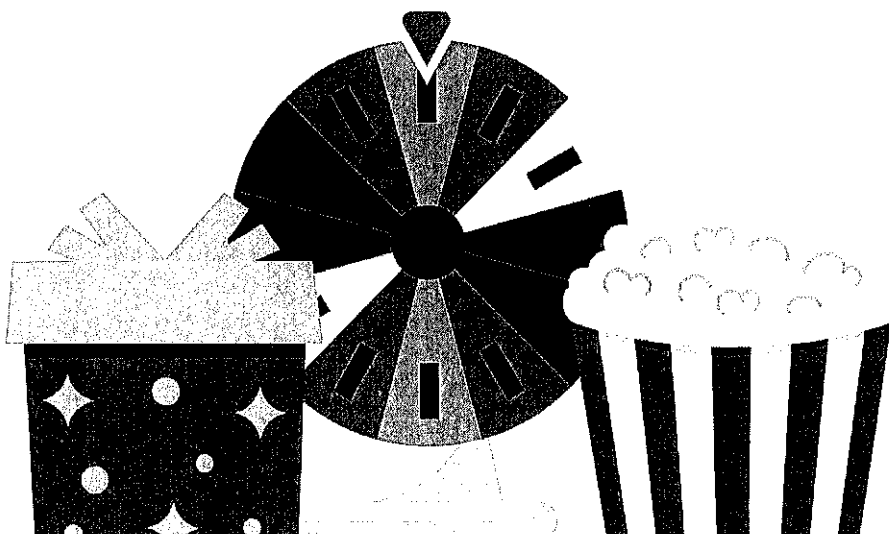
# FUN FAIR

FRIDAY, APRIL 10

5-6:30PM

BETHLEHEM GYM

GAMES • LIGHT CONCESSIONS • PRIZES



Open to all  
Bethlehem  
Families & Students

# IMPORTANT REMINDERS

## PERSONAL INFORMATION CHANGES

If you have changed your name, address, phone number or email address, please notify the church office with your information. You can call the church office at 920-452-4331 or email amy.weir@ourbethlehem.com with your new/current information. Thank you for your help.

## VISIT US ONLINE

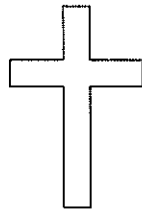
Bethlehem Lutheran Church and School is on Facebook. Please also visit us at our website, www.ourbethlehem.com. Check out the main page where you will find information about upcoming events and activities. See the calendar of important items. Find helpful information by clicking on the various tabs under *Church* and *School*.

## MAY VISITOR DEADLINE

If you would like to submit information for the May Visitor, please have your information to the church office no later than noon on **Thursday, April 16, 2026**. Please feel free to email amy.weir@ourbethlehem.com or drop it off in the church office with a note that it is for the Visitor.

## JOIN OUR UPCOMING EMAIL & COMMUNICATION LIST!

Stay informed with weather-related cancellations, receive The Visitor newsletter by email, and obtain special event announcements. Simply scan the QR code. We kindly ask that each adult in your household completes their own sign-up. We look forward to keeping you informed on all the happenings at Bethlehem Lutheran Church!



# VISITOR SPONSORSHIP

To help us defray expenses for producing and mailing our monthly newsletter, we have established a sponsorship program which includes a congregational contributor for the cost of \$50 per year; and a commercial contributor for the cost of \$120 per year. If interested, please drop off your payment or call the church office at 920-452-4331.

Dennis & Nancy Bearn  
Sandra Fischer  
Leonard Johnson  
George & Karen Haecker  
Linda Hulbert-Ertel

### Congregational Sponsors

Bev Fischer  
Bob & Lori Gottowski  
Linda Nikisch  
Beverly Bauer  
Steve & Peggy Hotz  
Louis Klueger

Jim & Judy Heinecke  
Cliff & Gail Schlegel  
Anita Krimmel  
Keith & Christine Wyckoff  
James Schmidt

Advanced Comfort Systems  
Irish Roofing

### Commercial Sponsors

Boneck Printing  
Irish Studios

Irish Hauling  
Knier Storage